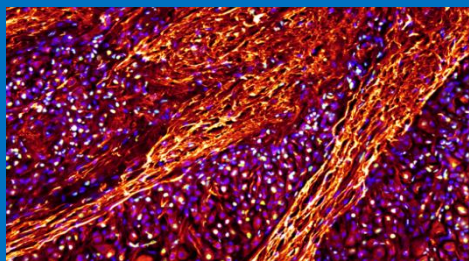


# Functional Area of Physiology and Behavior


## Histology



The **Histology** area is equipped with instruments utilized for the preparation of histological samples. The instruments available allow the inclusion of biological samples in paraffin, resin or optimal cutting temperature compound (OCT) and the cutting of sections of various thickness through the use of vibratome, cryostat and microtome.

First Floor - EAST Wing, #150

Manager: *Pamela Imperadore*  
pamela.imperadore@szn.it

Bookable instruments	Description	
Refrigerated Centrifuge <i>Eppendorf 5810 R</i>	The Eppendorf 5810 R refrigerated centrifuge is equipped with tilting rotors and adapters that allow to accommodate test tubes of various sizes, from 0.2 mL to 50 mL.	
Laboratory Oven	Oven with a temperature range between 50 and 350°C.	