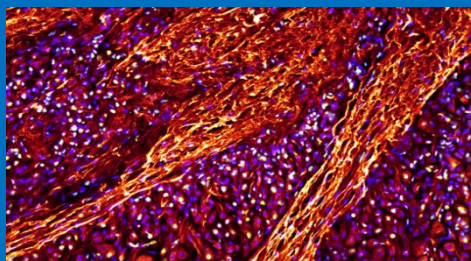


# Functional Area of Physiology and Behavior








## Histology



The **Histology** area is equipped with instruments utilized for the preparation of histological samples. The instruments available allow the inclusion of biological samples in paraffin, resin or optimal cutting temperature compound (OCT) and the cutting of sections of various thickness through the use of vibratome, cryostat and microtome.

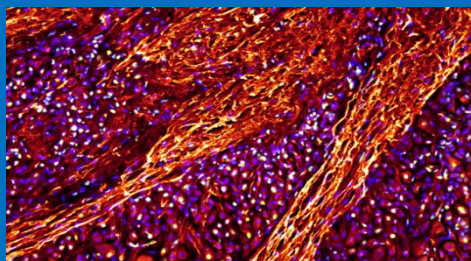
First Floor - EAST Wing, #149

Manager: *Pamela Imperadore*  
pamela.imperadore@szn.it

Bookable instruments	Description	
<b>Cryostat</b> <b>LEICA CM3050 S</b>	This cryostat is used to cut histological slides (frozen section histology). It is a rotary microtome placed in a freezer. The temperature can be varied, depending on the tissue being cut - usually from - 20 to -30° C.	
<b>Paraffin Rotary Microtome</b> <b>LEICA RM2245</b>	The instrument is a semi-motorized rotary microtome utilized for paraffin sections.	
<b>Sliding Microtome</b> <b>LEICA SM2010R</b>	The instrument produces high quality sections for routine histopathology (paraffin), neuroscience (fixed frozen brain) and industrial applications (foam and wood).	
<b>Vibratome</b> <b>LEICA VT1200S</b>	Vibrating blade microtome for high quality sectioning, can be used in semi- or fully automated mode.	
<b>Paraffin Oven</b> <b>BINDER VD115</b>	This histology oven, equipped with a VACUUBRAND vacuum pump, is useful for dissolving paraffin and keeping it in a liquid state; also used for the inclusion of samples.	
<b>Hybridization oven</b> <b>FINEPCR</b>	Rotating incubator for hybridization tubes 7-40 rpm, room temperature to 85°C, timer 99:59h:min.,w36xd27xh54.	
<b>Hybridization oven</b> <b>HM 4000 UVP</b>	Tilting and rotating incubator with two independent chambers. Temperature range from + 10 °C above ambient temperature to 80 °C for the upper chamber and 100 °C for the lower chamber.	

# Functional Area of Physiology and Behavior





## Histology



The **Histology** area is equipped with instruments utilized for the preparation of histological samples. The instruments available allow the inclusion of biological samples in paraffin, resin or optimal cutting temperature compound (OCT) and the cutting of sections of various thickness through the use of vibratome, cryostat and microtome.

First Floor - EAST Wing, #149

Manager: *Pamela Imperadore*  
pamela.imperadore@szn.it

Bookable instruments	Description	
Refrigerated Incubator Shaker <b>NEW BRUNSWICK SC.Innova 4230</b>	The Innova 4230 Refrigerated/Heated Incubator Shaker has the capability to heat or refrigerate. Temperatures in this refrigerated/heated incubator shaker can be set from a minimum of 4°C to maximum of 75°C.	
Microplate Photometer <b>Thermo Fisher Scientific Multiskan™ FC</b>	The instrument measure absorbance in 96-well plates. It is recommended for Immunoassays (ELISA), protein assays, endotoxins, cytotoxicity and proliferation assays, enzyme assays, growth curves.	
Macroscope <b>Leica Z16 APO</b>	The Leica Z16 APO is a fully apochromatic zoom system for high contrast, high-resolution, detailed analysis. The single beam path provides 2D images and ensures parallax-free imaging.	
Microscope <b>Olympus BX40</b>	The BX40 was developed for routine histological examinations and offers the advantages of a high-performance model.	
Benchtop Laminar Flow Cabinet <b>BIOAIR</b>	It is a partially recirculating downflow cabinet. The laminar flow is equipped with a UV light.	
Chemical Fume Hood - Histology sample preparation	Chemical hood intended for the preparation and processing of histological samples (e.g., fixation of samples for histology, staining)	